

Chapter 2.13. Great Basin Watershed Management Unit Assessment

2.13.1. Introduction

The West Desert Watershed Management Unit includes all streams located in the U.S.G.S Hydrological Units (HUCs) listed in Table 2.13-1. This management unit stretches from the north western portion of the state south to almost Cedar/Beaver Management Unit. There are many small streams within this unit. The larger streams are Deep Creek, Trout Creek, Grouse Creek, Pine Creek, Pole Creek, and South Junction Creek. These streams flow from the various mountain ranges into the West Desert and disappear. Some of them are diverted at the canyon mouths to be used for irrigation. Those streams in the Hydrologic Unit 17040210 flow north into the Snake River.

Table 2.13-1 U.S.G.S. Hydrological Units in the West Desert Watershed Management Unit

Hydrological Unit Code	Hydrological Unit Name
17040210	Raft
17040211	Goose
16020301	Hamlin-Snake Valleys
16020302	Pine Valley
16020303	Tule Valley
16020304	Rush-Tooele Valleys
16020305	Skull Valley
16020306	Southern Great Salt Lake Desert
16020307	Pilot - Thousand Springs
16020308	Northern Great Salt Lake Desert
16020309	Curlew Valley
16020310	Great Salt Lake

2.13.2. Water Quality Assessment Results

This region of the state is remote, with rugged mountain ranges, and desert. Only two streams were assessed and they were assessed using benthic macroinvertebrates collected. Trout Creek and Thomas Creek were assessed as supporting the Class 3A, cold water game fish beneficial use. Pole Creek was not assessed because the benthic macroinvertebrate data were not sufficient to make a determination of beneficial use under the narrative standard.

The Division of Water Quality is planning to survey this area within the next two years to identify reference sites that can be used to assess more of the streams. This will allow the field crews to monitor the streams once a year which will make it feasible to obtain data and make assessments for this unit.

Table 2.13-2 Stream Miles by Assessment Category – Lower Colorado Watershed Management Unit

	Size	Size Fully	Size Not	
	Assessed	Supporting	Supporting	Totals
Use				
Drinking Water	0.0	0.0	0.0	0.0
Fish Consumption	0.0	0.0	0.0	0.0
Swimming	0.0	0.0	0.0	0.0
Secondary Contact	0.0	0.0	0.0	0.0
Aquatic Life	30.7	30.7	0.0	30.7
Agricultural	0.0	0.0	0.0	0.0
		0.0	0.0	0.0
Drinking Water		0.0	0.0	0.0
Fish Consumption		0.0	0.0	0.0
Swimming		0.0	0.0	0.0
Secondary Contact		0.0	0.0	0.0
Aquatic Life		100.0%	0.0	100.0%
Agricultural		0.0	0.0	0.0

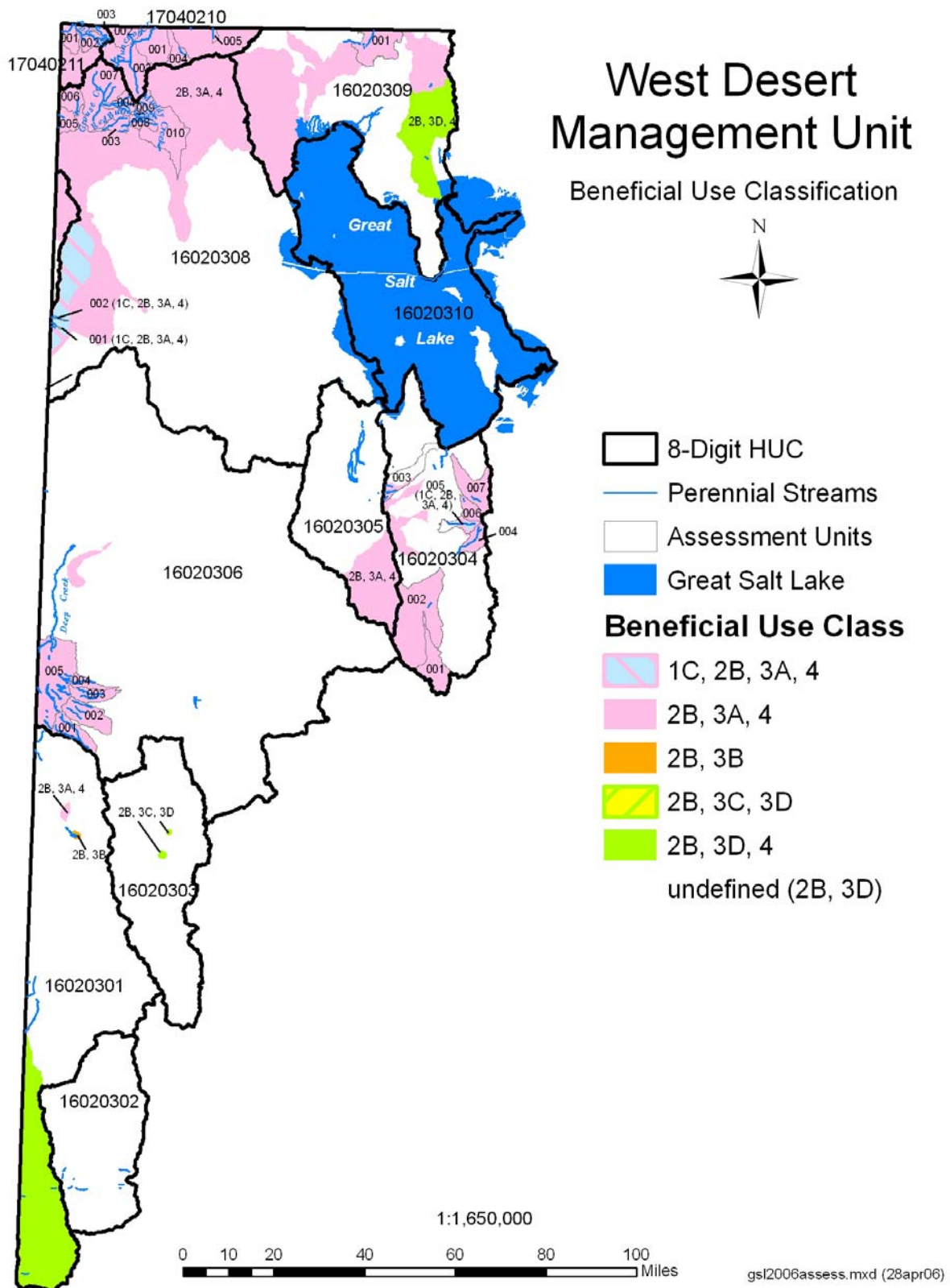


Figure 2.13-1 River and stream designated beneficial use classes - West Desert Watershed Management Unit

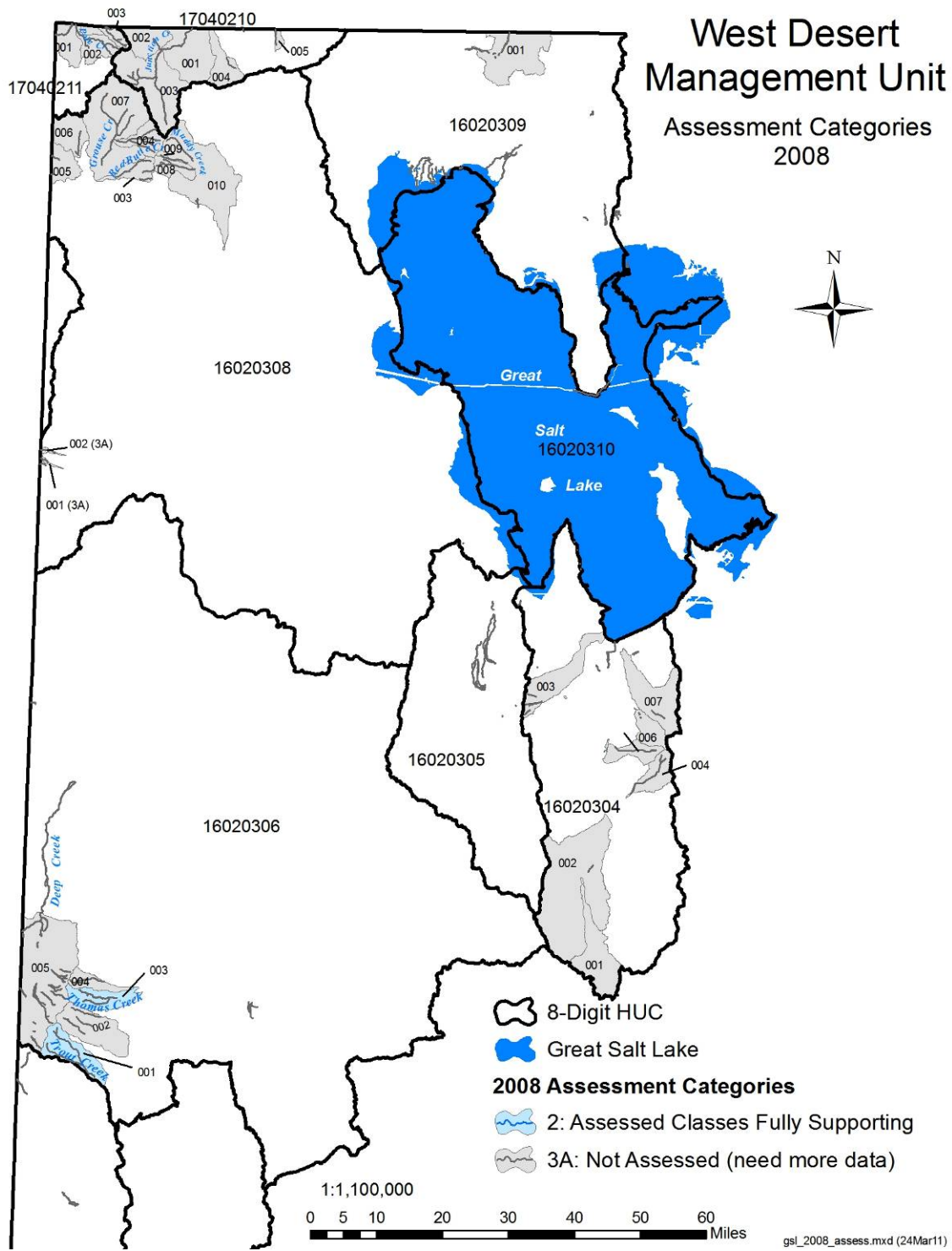


Figure 2.13-2 Beneficial use assessment by category – West Desert Water Quality Management Unit

This page intentionally left blank.